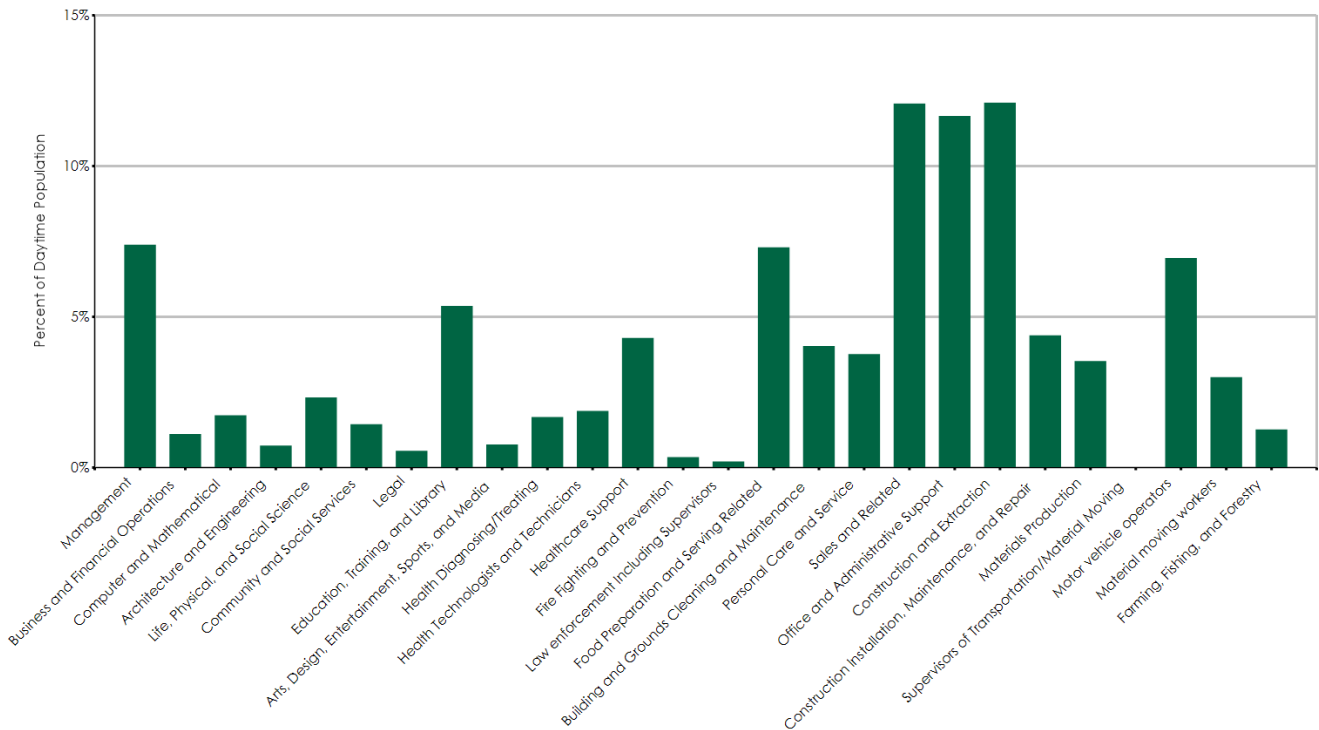


Segment	Count	Percent
Management	326	7.4%
Business and Financial Operations	49	1.1%
Computer and Mathematical	77	1.7%
Architecture and Engineering	32	0.7%
Life, Physical, and Social Science	102	2.3%
Community and Social Services	64	1.4%
Legal	25	0.6%
Education, Training, and Library	236	5.4%
Arts, Design, Entertainment, Sports, and Media	34	0.8%
Health Diagnosing/Treating	74	1.7%
Health Technologists and Technicians	83	1.9%
Healthcare Support	189	4.3%
Fire Fighting and Prevention	16	0.4%
Law enforcement Including Supervisors	9	0.2%
Food Preparation and Serving Related	322	7.3%
Building and Grounds Cleaning and Maintenance	178	4.0%
Personal Care and Service	166	3.8%
Sales and Related	532	12.1%
Office and Administrative Support	514	11.7%
Construction and Extraction	533	12.1%
Construction Installation, Maintenance, and Repair	193	4.4%
Materials Production	156	3.5%
Supervisors of Transportation/Material Moving	0	0.0%
Motor vehicle operators	306	7.0%
Material moving workers	132	3.0%
Farming, Fishing, and Forestry	56	1.3%
<b>Total Daytime Population</b>	<b>4,402</b>	<b>100.0%</b>



Data Source: Dun & Bradstreet Business Table Last Update: October 03, 2018

All estimates, projections or forecasts in this report are subject to errors, including statistical error, error due to the subjective nature of some data, error due to changes in demographics, error based on lagging competitor information or growth data, and error due to factors that are not included in the model. The user assumes all risk of reliance on this information.

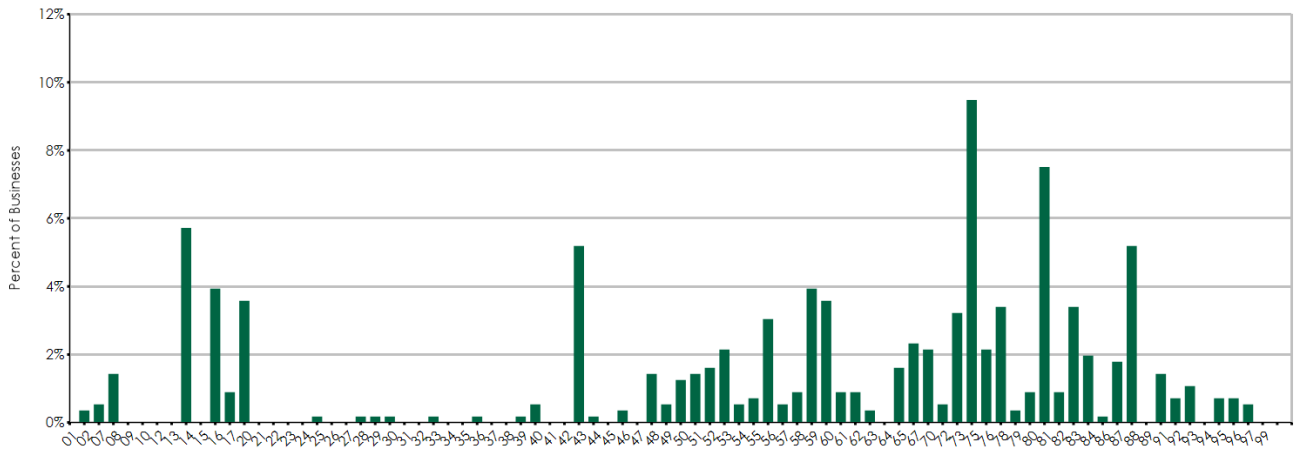
Employee Count	Count of Businesses
0 - 50	545
51 - 100	12
101 - 200	1
201 - 300	0
300+	1
<b>Total</b>	<b>559</b>

2-Digit SIC	Business Description	0-50 Emp.	51-100 Emp.	101-200 Emp.	201-300 Emp.	300+ Emp.	Total
01	Agricultural Production-Crops	2	0	0	0	0	2
02	Agricultural Production-Livestock	3	0	0	0	0	3
07	Agricultural Services	8	0	0	0	0	8
08	Forestry	0	0	0	0	0	0
09	Fishing, Hunting & Trapping	0	0	0	0	0	0
10	Metal Mining	0	0	0	0	0	0
12	Coal Mining	0	0	0	0	0	0
13	Oil & Gas Extraction	30	2	0	0	0	32
14	Mining & Quarrying-Nonmetallic Minerals	0	0	0	0	0	0
15	Building Construction-Gen Contractors	22	0	0	0	0	22
16	Heavy Construction Except Building	4	0	1	0	0	5
17	Construction-Special Trade Contractors	20	0	0	0	0	20
20	Food & Kindred Products Mfrs	0	0	0	0	0	0
21	Tobacco Products Mfrs	0	0	0	0	0	0
22	Textile Mill Products Mfrs	0	0	0	0	0	0
23	Apparel & Other Finished Products Mfrs	0	0	0	0	0	0
24	Lumber & Wood Prods Except Furntr Mfrs	1	0	0	0	0	1
25	Furniture & Fixtures Mfrs	0	0	0	0	0	0
26	Paper & Allied Products Mfrs	0	0	0	0	0	0
27	Printing Publishing & Allied Industries	1	0	0	0	0	1
28	Chemicals & Allied Products Mfrs	1	0	0	0	0	1
29	Petroleum Refining & Related Inds Mfrs	1	0	0	0	0	1
30	Rubber & Miscellaneous Plastics Mfrs	0	0	0	0	0	0
31	Leather & Leather Products Mfrs	0	0	0	0	0	0
32	Stone Clay Glass & Concrete Prods Mfrs	1	0	0	0	0	1
33	Primary Metal Industries Mfrs	0	0	0	0	0	0
34	Fabricated Metal Products Mfrs	0	0	0	0	0	0
35	Industrial & Commercial Machinery Mfrs	1	0	0	0	0	1
36	Electronic & Other Electrical Equip Mfrs	0	0	0	0	0	0
37	Transportation Equipment Mfrs	0	0	0	0	0	0
38	Measuring & Analyzing Instruments Mfrs	1	0	0	0	0	1
39	Miscellaneous Manufacturing Inds Mfrs	3	0	0	0	0	3
40	Railroad Transportation	0	0	0	0	0	0
41	Local/Suburban Transit & Hwy Passenger	0	0	0	0	0	0
42	Motor Freight Transportation/Warehouse	29	0	0	0	0	29
43	United States Postal Service	1	0	0	0	0	1
44	Water Transportation	0	0	0	0	0	0
45	Transportation By Air	2	0	0	0	0	2
46	Pipelines Except Natural Gas	0	0	0	0	0	0
47	Transportation Services	8	0	0	0	0	8
48	Communications	2	1	0	0	0	3
49	Electric Gas & Sanitary Services	6	1	0	0	0	7
50	Wholesale Trade-Durable Goods	8	0	0	0	0	8
51	Wholesale Trade-Nondurable Goods	9	0	0	0	0	9
52	Building Materials & Hardware	11	1	0	0	0	12
53	General Merchandise Stores	3	0	0	0	0	3
54	Food Stores	3	1	0	0	0	4
55	Automotive Dealers & Service Stations	17	0	0	0	0	17
56	Apparel & Accessory Stores	3	0	0	0	0	3
57	Home Furniture & Furnishings Stores	5	0	0	0	0	5
58	Eating & Drinking Places	21	1	0	0	0	22

Data Source: Dun & Bradstreet Business Table Last Update: October 03, 2018

All estimates, projections or forecasts in this report are subject to errors, including statistical error, error due to the subjective nature of some data, error due to changes in demographics, error based on lagging competitor information or growth data, and error due to factors that are not included in the model. The user assumes all risk of reliance on this information.

2-Digit SIC	Business Description	0-50 Emp.	51-100 Emp.	101-200 Emp.	201-300 Emp.	300+ Emp.	Total
59	Miscellaneous Retail	20	0	0	0	0	20
60	Depository Institutions	5	0	0	0	0	5
61	Nondepository Credit Institutions	5	0	0	0	0	5
62	Security & Commodity Brokers	2	0	0	0	0	2
63	Insurance Carriers	0	0	0	0	0	0
64	Insurance Agents Brokers & Service	9	0	0	0	0	9
65	Real Estate	13	0	0	0	0	13
67	Holding & Other Investment Offices	12	0	0	0	0	12
70	Hotels Rooming Houses & Camps	3	0	0	0	0	3
72	Personal Services	18	0	0	0	0	18
73	Business Services	53	0	0	0	0	53
75	Auto Repair Services & Parking	12	0	0	0	0	12
76	Miscellaneous Repair Services	19	0	0	0	0	19
78	Motion Pictures	2	0	0	0	0	2
79	Amusement & Recreation Services	5	0	0	0	0	5
80	Health Services	41	0	0	0	1	42
81	Legal Services	5	0	0	0	0	5
82	Educational Services	16	3	0	0	0	19
83	Social Services	11	0	0	0	0	11
84	Museums Art Galleries & Gardens	1	0	0	0	0	1
86	Membership Organizations	10	0	0	0	0	10
87	Engineering & Accounting & Mgmt Svcs	28	1	0	0	0	29
88	Private Households	0	0	0	0	0	0
89	Miscellaneous Services Nec	8	0	0	0	0	8
91	Executive, Legislative, & General Govt, Except Finance	4	0	0	0	0	4
92	Justice, Public Order, & Safety	6	0	0	0	0	6
93	Public Finance, Taxation, & Monetary Policy	0	0	0	0	0	0
94	Administration Of Human Resource Programs	3	1	0	0	0	4
95	Administration Of Environmental Quality & Housing Programs	4	0	0	0	0	4
96	Administration Of Economic Programs	3	0	0	0	0	3
97	National Security & International Affairs	0	0	0	0	0	0
99	Nonclassifiable Establishments	0	0	0	0	0	0



Data Source: Dun & Bradstreet Business Table Last Update: October 03, 2018

All estimates, projections or forecasts in this report are subject to errors, including statistical error, error due to the subjective nature of some data, error due to changes in demographics, error based on lagging competitor information or growth data, and error due to factors that are not included in the model. The user assumes all risk of reliance on this information.